

# RADA

Spring 1, 2024  
GBS Theatre

# The Sewing Group (2016)

by E. V. Crowe

## Cast (cast in order of appearance)

Emma Symmonds  
Tamsin Benn  
Reece Miller  
Joanie Diamond  
Caitlin McEwan  
Julia Kass

## Creative Team

### Director

Joan Oliver

### Designer

Tiffany Yu

### Lighting Designer

Laura Hawkins

### Associate Lighting Designer

Naomie Mmbaga

### Sound Designer

Marco Curcio

### Movement

Michalis Aristidou

### Voice Coach

Emma Woodvine

### Dialect Coach

Joe Windley

### Fight Coach

Bret Yount

### Captioner

Jenny Skene

Content warnings: explores some challenging themes including death, grief, subtext of child neglect and contains sudden fire and use of replica firearms.



Scan the QR code to visit the actors' student profiles.

# Production Team

The students working on this production are on the FdA in Technical Theatre and Stage Management, the BA (Hons) in Technical Theatre and Stage Management and the PgDip in Theatre Costume.

## **Production and Technical Manager**

Bethany Bean

## **Stage Manager**

Katie Glassbrook

## **Deputy Stage Manager**

Lucy Prince

## **Assistant Stage Manager**

Ana Chen

## **ASM2s**

Tom Hall

Eliana Levi

## **Chief Electrician**

Mia Swann

## **Production Electrician**

Mila Mussatt

## **Lighting Programmer**

Lara Carey

## **Lighting Operators**

Isaac Datson

Ana Lucia Emiliani

Ruth Kogelmann

## **Lighting Crew**

Isaac Datson

Ana Lucia Emiliani

Siena Godfrey

Ruth Kogelmann

Ryan Liu

Summer Randall

## **Chief Sound / Production Sound Engineer**

Matt Webb

## **Sound Operator**

Charlotte Bertram

## **Sound Crew**

Danielle Adams

Charlotte Bertram

Mareth Burns

Tyler Dayani

Nathan Quraishi Holt

## **Video Engineer**

Naomie Mmbaga

## **Costume Supervisor**

Vari Pritchard

## **Wardrobe Assistants**

Laura Conroy

Zelfa el Khazen

Marine Weiss

## **Dressers**

Amelia Barrett

Elsbeth Green

Nada Sheikh

## **Wigs, Hair and Make-Up Supervisor**

Keisha Banya (staff)

## **Scenic Art**

### **Head of Department**

Michael Enamejewa

### **Scenic Art Assistants**

Amelia Barrett

Elsbeth Green

Thomas Hunt

Nada Sheikh

Jenny Veasey

Jacob Young

## **Construction Project Manager**

Alice Gibson

## **Scenery Builder**

Will Hamilton

## **Construction Crew**

Tsukasa Akai

Jonathan Armitage

India Fisher

Georgina McCartney

Carmen Page

## **Prop Makers**

Miriam Dheva-Aksorn

Martin Wright

## **Prop Assistants**

Tomer Calfon

Tom Hall

Shannon Jenkins

Eliana Levi

ZhiYi Liu

## **Stage Crew**

Danielle Adams

Charlotte Bertram

Mareth Burns

Tyler Dayani

Nathan Quraishi Holt

## **Special thanks**

Frances Chappell

Tanya Chappell

Verity Glassbrook

David Moreton



Scan the QR code to visit the Technical Theatre Arts student profiles.

# Biographies

## **E. V. Crowe**

### **Writer**

E. V. Crowe is a writer for the theatre (graduate of the Royal Court Young Writers Programme Super Group) film, TV, radio and dance. Her theatre work includes *Shoe Lady* (Royal Court), *The Nico Project* (Manchester International Festival), *The Unknown* (Royal Court), *Nostalgia* (Cardboard Citizens), *Brenda* (High Tide / Yard Theatre), *I Can Hear You* (RSC), *Virgin* (Watford Palace Theatre / Nabokov), *The Big Idea: Sex* (Royal Court), *Liar Liar* (Unicorn Theatre), *Searched* (Royal Court), *Hero* (Royal Court), *Young Pretender* (Nabokov / Edinburgh Fringe Festival), *Kin* (Royal Court). Film work includes *The Soldier* (DNA Films / Film 4), *White* (Quiddity Films / Film 4) and an adaptation of *The Dynamite Room* (Stray Bear / Creative England). TV work includes *The Crow Girl*, one episode (Buccaneer/Paramount+), *Pig Life* (BBC/BBC America), *Spinsters* (Objective/ Channel 4), *Glue*, five episodes (Eleven Film / E4) and *Coming Up: Big Girl* (Toughpaper Television/C4).

## **Joan Oliver**

### **Director**

Joan graduated from RADA's three year acting programme in 1993, after which she appeared in a number of theatre, TV, film, and radio productions. Alongside her acting, Joan began establishing herself as a teacher and freelance director. She returned to RADA in 2009, when she became RADA's Education and Outreach Manager, and held this role until 2014, when she took up her position as RADA's Foundation in Acting Course Director. Joan continued in this role until 2021, when she moved into her most recent position as RADA's first Director of Equity. Joan's directing at RADA includes *random* (debbie tucker green), *Rotterdam* (Jon Brittain), *The Seagull* (Anton Chekhov), which she also adapted, *NSFW* (Lucy Kirkwood), and most recently *Waiting for Godot* (Samuel Beckett).

## **Tiffany Yu**

### **Designer**

Tiffany is in her third year of the BA (Hons) in Technical Theatre and Stage Management course at RADA, specialising in design and scenic art. In the last three years she has worked as the Set Designer for *Romeo and Juliet* and *Pericles* - both for the 2023 Shakespeare for Young Audiences programme (RADA, Jerwood Vanbrugh Theatre), Head of Scenic Art for *The Effect* (RADA, Gielgud Theatre), as well as being a Scenic Artist for *The Motherf\*\*ker with the Hat* (RADA, GBS Theatre), *Wild Cherries* (RADA, Jerwood Vanbrugh Theatre), *The Bureau* (RADA, Gielgud Theatre), *NSFW* (RADA, Gielgud Theatre), *The Wolves* (RADA, Jerwood Vanbrugh Theatre),

*Curse of the Starving Class* (RADA, GBS Theatre), *Kursk* (RADA, Gielgud Theatre), *Stop Kiss* (RADA, GBS Theatre), and *Plaques and Tangles* (RADA, Jerwood Vanbrugh Theatre). She has also completed work placements at the National Theatre and the Royal Opera House working as a scenic artist on *The Witches* (Olivier Theatre), *Infinite Life* (Dorfman Theatre) and *Wozzeck* (Royal Opera House).

## **Laura Hawkins**

### **Lighting Designer**

Laura is a freelance Lighting Designer working across theatre, dance and live performance. A selection of recent design credits include: *The All New Adventures of Peter Pan - A Pantomime Sequel* (The Alban Arena, St Albans); *Ugly: A Cinderella Story* (Cumbernauld Theatre); *Woman Walking* (Sylvian Productions/ Perth Theatre); *Lena* (Feather Productions / Glass Handbag); *Thora* (St Magnus Festival); *Shrill, Two in a Barrel* (Scissor Kick); *The Steamie* (Dundee Rep); *Awaken* (Cheryl Prince); *Summer on Stage 2022 and 2023, The Multiverse is Gay, Seven Against Edinburgh* (Royal Lyceum Theatre, Edinburgh); *Bill McLaren: Fighting the Enemy* (Firebrand Theatre); *The Comic Tragedy, By the Seat of your Pants* (Plutot la Vie); *Clybourne Park* (Rapture Theatre Company); *Obvious Unrest, Torn* (Faux Theatre); and *By a Thread* (Kat and Dawg Productions).

Laura also works as a relighter and is an Associate Lighting Tutor at RADA. [laurahawkins.design](http://laurahawkins.design)

## **Naomie Mmbaga**

### **Associate Lighting Designer**

Naomie (she/her) is a second year student on the FdA in Technical Theatre and Stage Management specialising in lighting. Previous credits include: *Angels in America Part One: Millennium Approaches* directed by Roger Haines (Chief Electrician, Jerwood Vanbrugh Theatre), *Sticks and Stones* directed by Diyan Zora (Production Electrician, Gielgud Theatre), *Waiting for Godot* directed by Joan Oliver (Lighting Crew, GBS Theatre), *Company* directed by Nona Shepphard (Lighting Operator/ Lighting Crew, Jerwood Vanbrugh Theatre).

## **Marco Curcio**

### **Sound Designer**

Marco is a sound engineer with more than 15 years of experience working in London's West End Theatres and for the Royal National Theatre. In the last few years he has been exploring Sound Design and Sound Recording for film. He has been working on a variety of drama, art, commercial and educational projects for companies such as the British Council, i-D magazine, TrustPilot, SIFA (Singapore International Festival of the Arts) and The Royal Court Theatre.

# RADA Supporters

Thank you to all those who donate in support of our training, our students, our creative and outreach programmes.

## Principal Partner

Warner Bros. Discovery

## President's Circle

Sir Kenneth Branagh  
Aidan Clegg  
Alan and Ros Haigh  
Tina and Martin Hughes  
Satoko Yamaga Macdonald  
Sir Stephen Waley-Cohen Bt  
And all those who wish to remain anonymous.

## Benefactors

Zac and Lucy Barratt  
Victor and Giulia Loewy  
John and Antonia Romeo  
Tanya Rose  
David Kaskel and Chris Teano  
Geraldine Winner

## Platinum Patron

Danny Clifford  
Will and Jo Davies  
Paul and Gill Kendrick  
Richard Lissack KC  
Andrew and Shirley Sutch  
The Lynen Family  
David and Carole Warren

## Starring Role

Russ and Linda Carr  
Peter Davies  
Wendy Jardine  
Gemma Jones  
Robert Lister  
Jill Whitehouse  
Peter Williams

We would like to acknowledge the kind support of our RADA Leading Role, Supporting Role, Ensemble and Audience members.

## Corporate partners

### Platinum partners

Shure  
Autograph Sound  
ROBE Lighting

### Gold partners

Anna Valley Ltd  
KV2 Audio  
Notch  
Santander Universities UK  
White Light Ltd

### Silver partners

Cadac  
MDG  
Panalux UK  
Quintessentially  
Zero 88

## Bronze partners

Ambersphere  
Avolites  
Champagne Taittinger  
ETC  
Factory  
Neg Earth  
PRG UK  
Projected Image  
Swarovski  
TSL Lighting  
Triple E

## Event partners

AXA XL  
Pearl and Dean  
Sotheby's London

## Stage Critical

## Lead Supporters

The Utley Foundation  
Satoko Yamaga Macdonald

## Major Supporters

CHK Foundation  
The Carne Trust  
Honeymead Arts Trust  
Anne Peck / The Schwab Fund

## Supporters

Marie Barone  
Sir Peter Bazalgette  
Will and Jo Davies  
Eon Productions  
Ros and Alan Haigh  
Ian and Beth Mills  
Maggie and Peter Murray-Smith  
Sotheby's  
Patrick and Anna Thomson  
The Sylvia Waddilove Foundation  
The William and Frances Branagh Memorial Fund  
Geraldine Winner

And all those who wish to remain anonymous.

We would also like to thank everyone who supported Stage Critical through our Big Give Christmas Challenge 2023 campaign.

## Trusts and Foundations

The Behrens Foundation  
The Reed Foundation  
The Sidney E Frank Foundation  
The Utley Foundation  
Watson Foundation

## Laurence Isaacson Scholarship

## Scholarship Fund

Anne Peck  
ASRADA  
The Amy Mitcheson Fund  
The Boris Karloff Foundation  
The Carne Trust  
The Charles Michael Holloway Charitable Trust  
The Clothworkers' Foundation  
The John S Cohen Foundation  
The Desmond Gill Memorial Award  
The D'Oyly Carte Charitable Trust  
The Gilbert and Eileen Edgar Foundation  
The Grahame Norris Memorial Fund  
The Harold Hyam Wingate Foundation  
The Sir John Gielgud Charitable Trust Bursary  
The Josephine Hart Poetry Foundation  
The Laurence Olivier Award  
The Leverhulme Trust  
The Lilian Baylis Award  
The Lionel Bart Foundation  
Trish Montemuro Bursary  
The Rayne Foundation  
Santander Universities UK  
Sophie's Silver Lining Fund  
The South Square Trust  
The Stanley Picker Charitable Trust  
The Thistle Trust  
The Wall Trust  
Warner Bros. Discovery  
The William and Frances Branagh Memorial Fund

## Legacy Pledgers

Charles Barton  
Marcus and Susie Bicknell  
Philip Carne MBE  
Kenneth Cohen  
Sarah Cook  
Mike Cooper  
Craig Crosbie  
Alastair Davidson  
Sheila Dickinson  
Maureen Elton  
Sarah Evans  
Anthony Gardner  
Don Gaskell  
Stephen Greif  
Guy Henry  
Richard Hicks  
Robin Houston  
David Hunt  
Vivian Munn  
Nigel Pivaro  
Fiona Shaw CBE  
Michael Simkins  
John St Brioc Hooper  
Felicity Trew  
Bruce Wall  
Camilla Whitworth-Jones  
Anonymous

## Legacy Supporters

Margaret Burkinshaw  
Renée Cooper  
Alastair Davidson  
Fenella Fielding  
Iris Evelyn Gillett  
James Hamilton  
Laurence Isaacson  
Robert Kaliban  
Sheila Manning  
Guy Pursey  
Ann Richardson  
Alan Rickman  
Griff Thomas

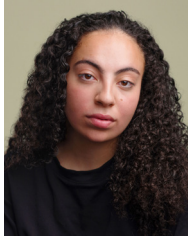
## Awards in Perpetuity

Constance Roberts  
Dame Irene Vanbrugh  
Debbie Cronshaw  
Eleanore Bryan  
Elizabeth Sebok (Lead Voice Tutor)  
Eunice Black  
The Friends of RADA  
Garth Wilton - dedicated to Ann Wilton  
Gillian Wilson  
John Thaw  
Jess Sleath  
Kate Dreyer Memorial  
Keely Donovan  
Keith Waterhouse  
Lady Pilkington  
Lionel Gamlin  
Lord and Lady Attenborough  
Marianne Pearce  
Mary Higgins  
Mary Morris  
Max Reinhardt  
Peter and Sheila Bennett  
Peter Barkworth  
RADA Associates  
The Rayne Foundation  
The Searle Scholarship  
Sir John Gielgud Bursary  
St Clair Bayfield  
The Sylvia London Student Bursary  
WCRS Student Bursary

## BA (Hons) in Acting



Jack  
Ambrose



Bella  
Aubin



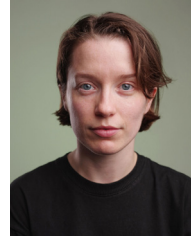
Tamsin  
Benn



Lydia-May  
Cooney



Joanie  
Diamond



Caroline  
Elms



Millie  
Faraway



Misheck Albert  
Freeman



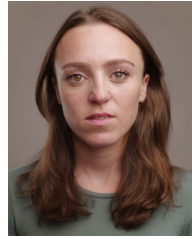
Chengxi  
Fu



Shakeel  
Haakim



Alfie  
Jallow



Julia  
Kass



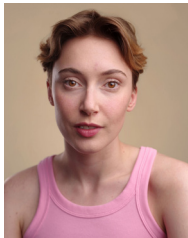
Tom  
Lyons



Freddie  
MacBruce



Caitlin  
McEwan



Sidonie  
McLaren



Lewis  
Merrylees



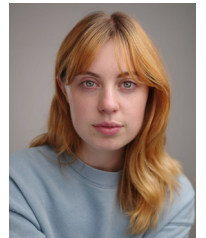
Reece  
Miller



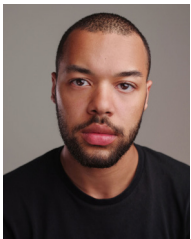
Keriola  
Mosuro



Rachel  
O'Connell



Ayesha  
Ostler



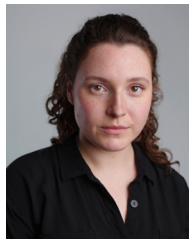
Miles  
Paloma



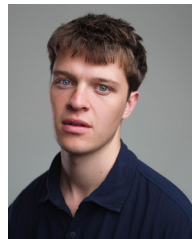
Sophia  
Razvi



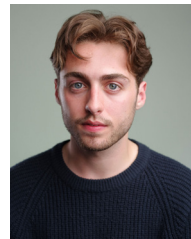
Jonathan  
Rubin



Emma  
Symmonds




Jasper  
Talbot



Fred  
Woodley Evans

 @RADA\_London

 RoyalAcademyOfDramaticArt

 royalacademyofdramaticart

 RADA\_London

[rada.ac.uk](http://rada.ac.uk)

Patron: Her Late Majesty The Queen

Registered charity no. 312819

Headshots by Akta, [aktaphotography.com](http://aktaphotography.com)



### Become a member

Become a RADA member and enjoy exclusive opportunities to get closer to our work. Your support helps us continue to train and nurture the next generation of creative talent. Join us at [rada.ac.uk/membership](http://rada.ac.uk/membership) or scan the QR code.